

Companion 4' x 8'

44501 hardware only

44504 bundle with single side graphic

44507 bundle with double side graphic

Parts Description:

44511- 4' x 8' single sided graphic (not shown) optional

44514- 4' x 8' double sided graphic (not shown) optional

44550- top corner

44551- bottom corner

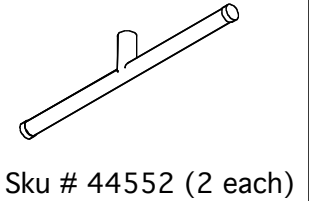
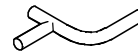
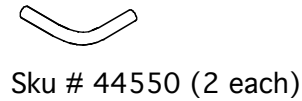
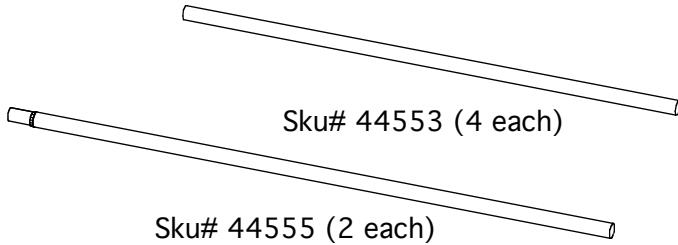
44552- platform legs

44553- 41" tube

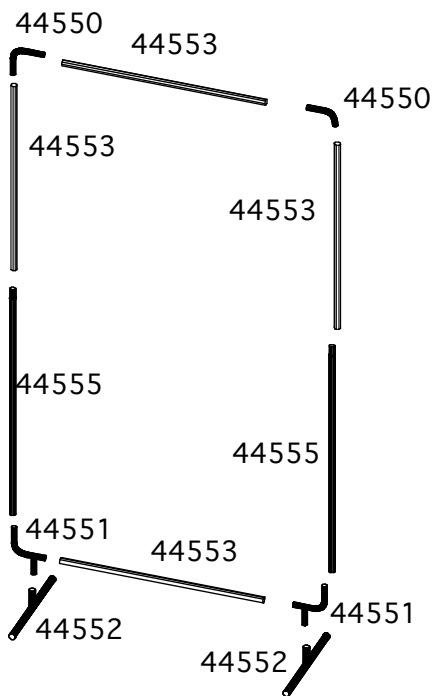
44555- 50.125" tube with reducing end

44570- Blk carrying bag (8" x 55") (not shown)

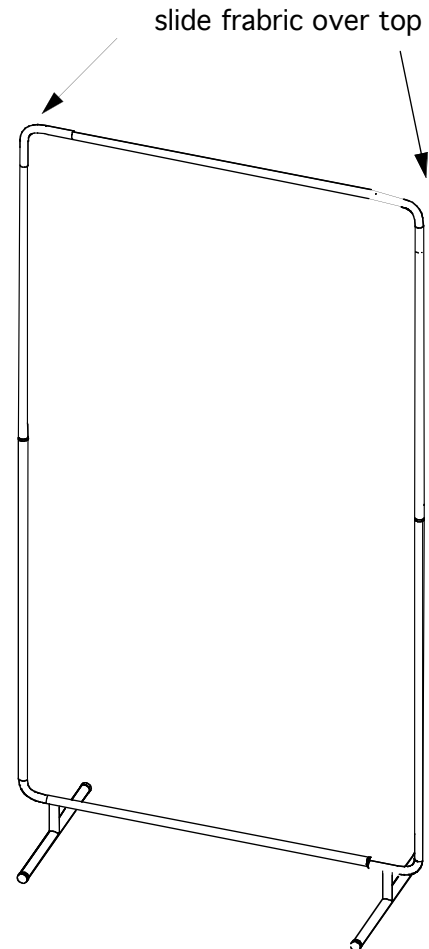
Hardware required for setup:



Set-up instructions:



1. Assemble the bottom
2. Install the sides (44555 & 44553)
3. Assemble top (44550, 44553, 44550)
4. Install the top assembly



Drawing # 67-24006

Date: 4/2/04