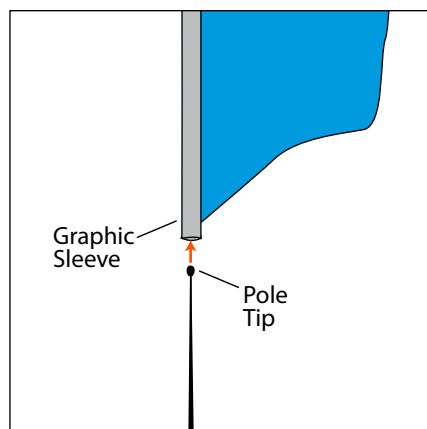
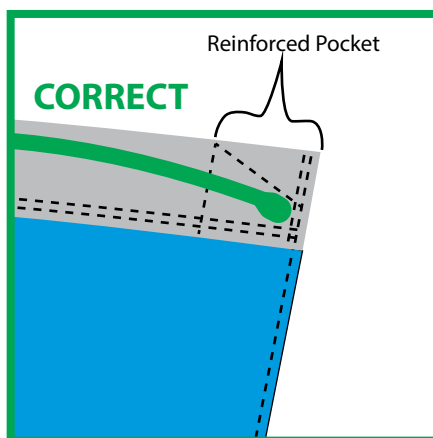
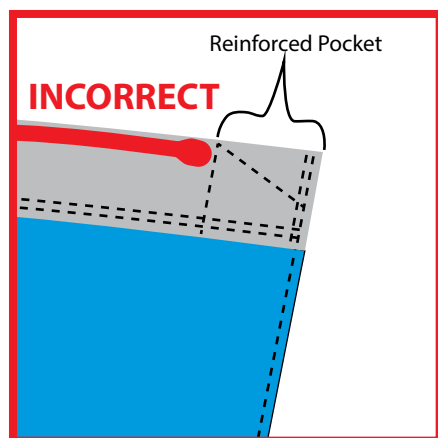
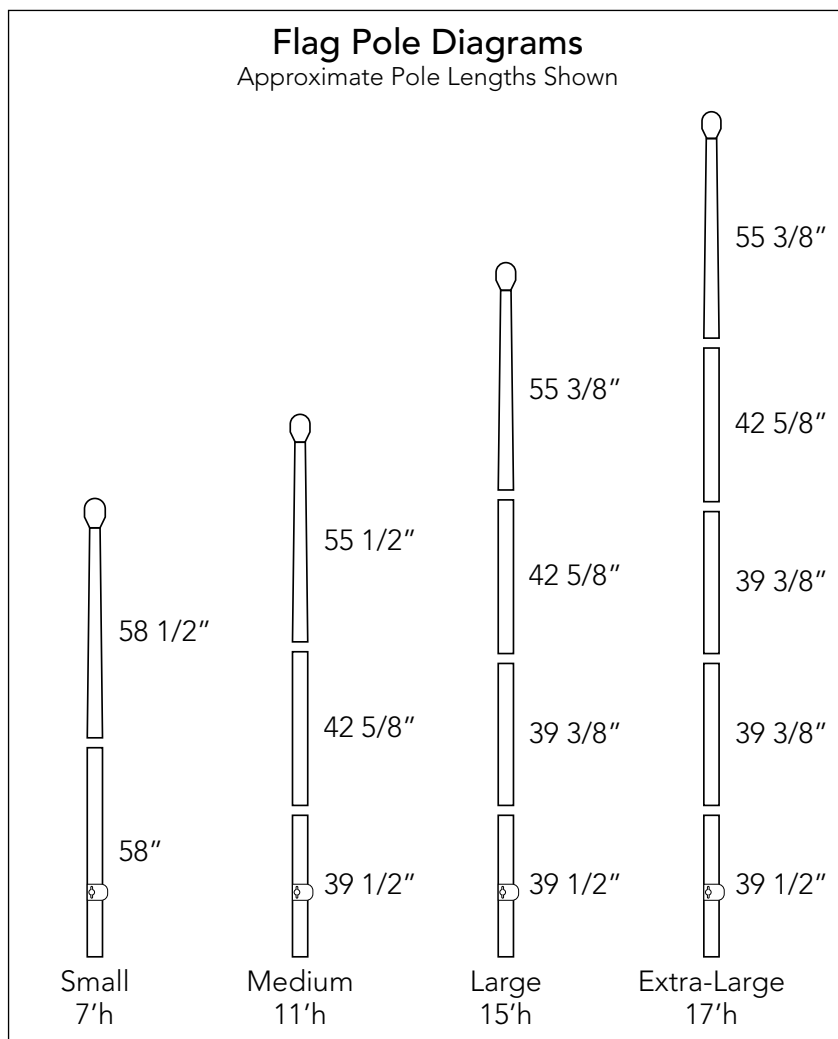


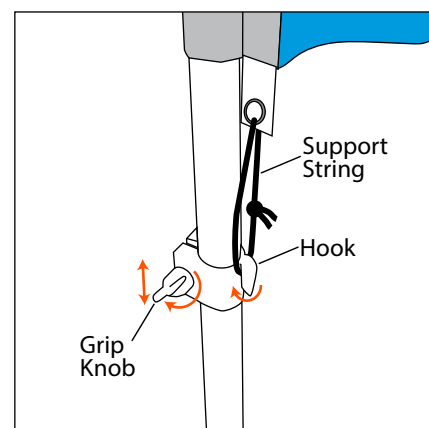
1. Assemble the poles together.
(See Flag Pole Diagram for more details.)



2. Insert Pole Tip through flag Graphic Sleeve until pole reaches end of sleeve.

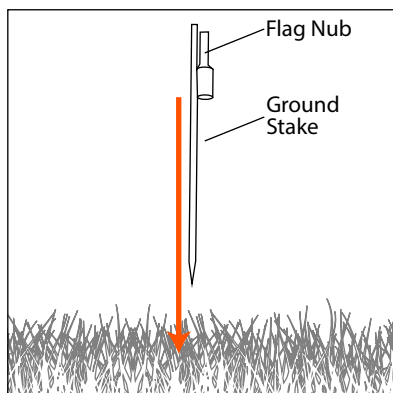


3. Make sure that the pole tip goes into the reinforced pocket at the very end of the graphic sleeve, or the pole may rip through the side of the sleeve.

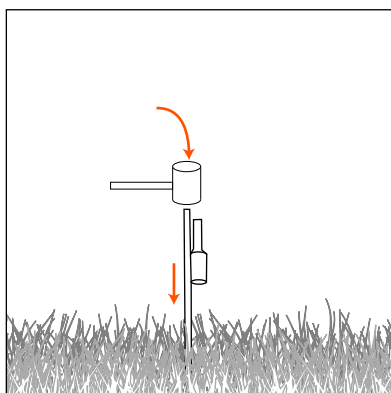


4. Pull the flag Support String over the pole hook. If necessary, loosen the Grip Knob to slide hook up or down to desired height. Tighten Grip Knob when done.

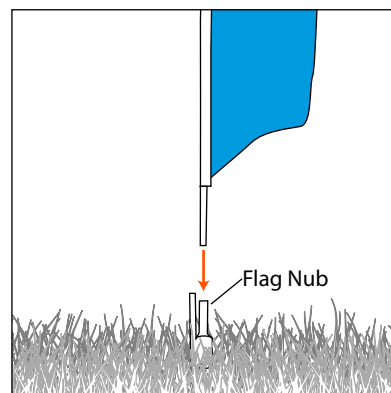
Outdoor Ground Stake Assembly



1. Insert the Ground Stake into the ground.

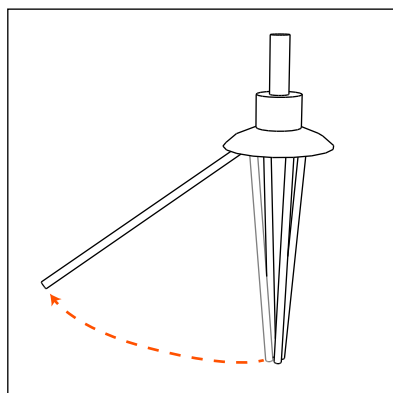


If necessary, use a rubber mallet on the taller portion of the ground stake.

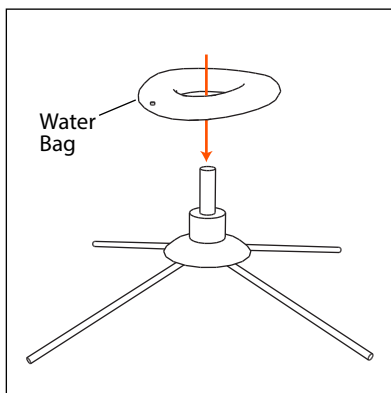


2. Plant the flag in the Ground Stake Nub until fully seated.

Indoor Scissor Base Assembly

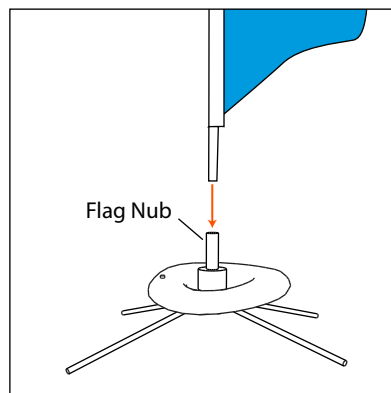


1. Expand the (4) Scissor Base legs. Place in the desired flag location.



2A. Using a faucet or hose, fill up the Water Bag with water. Do not fill the bag up completely - doing so may cause the Water Bag to burst.

2B. Place the Water Bag over the Flag Nub of the Scissor Base.



3. Plant the flag in the Scissor Base Nub until fully seated.