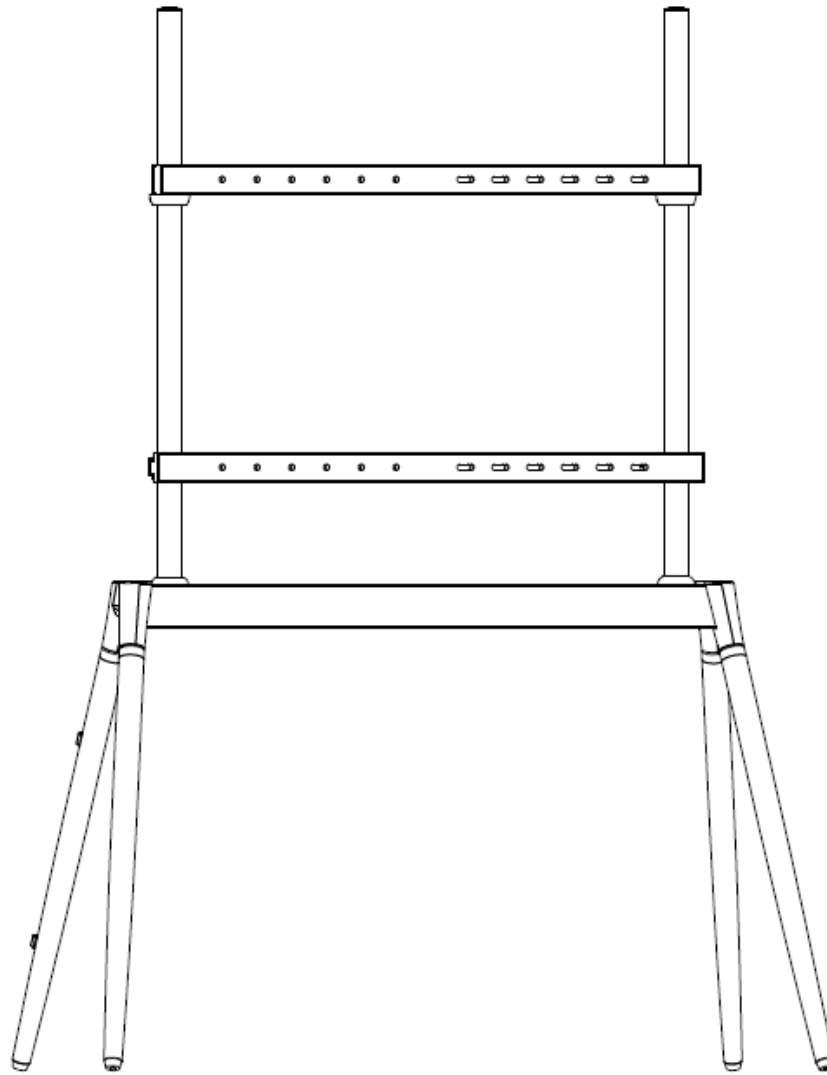
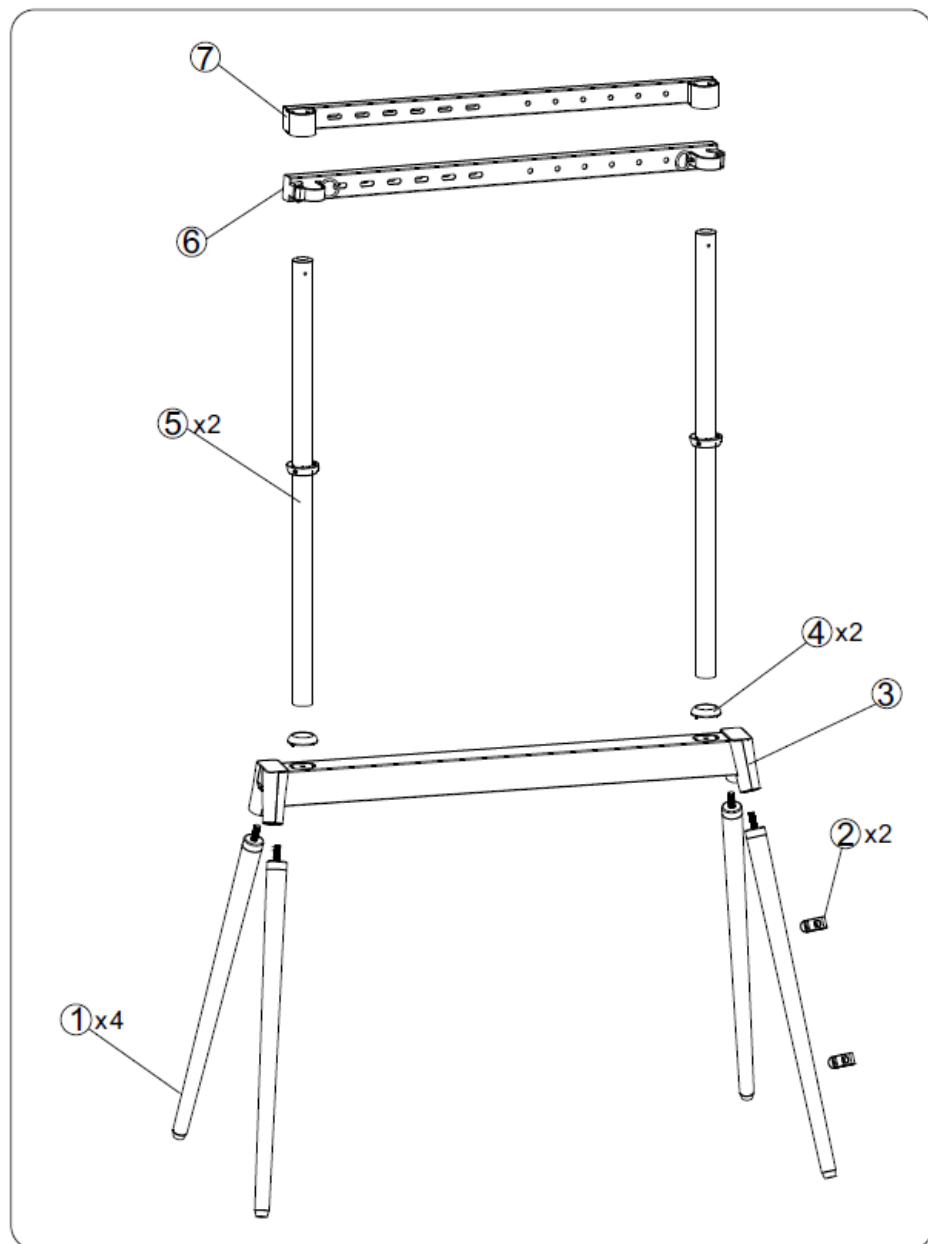


Sawhorse Monitor Stand



Parts for Assembly

86"/88 lbs. Max Monitor Size

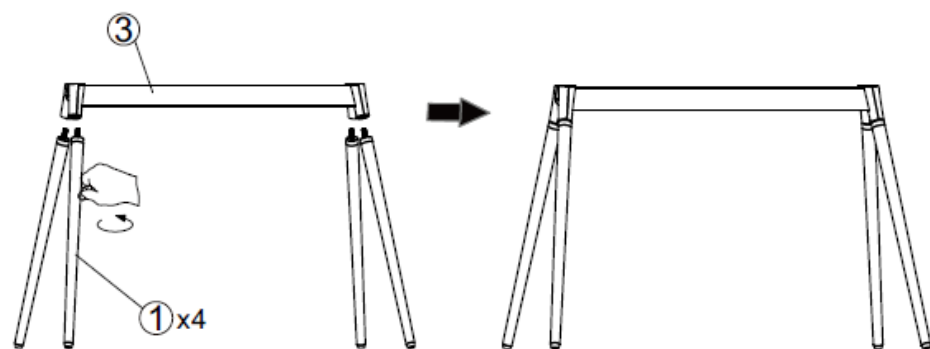


A x2 	B x2 	C x2
D x4 Ø5xØ15x1	E x2 ST4.8x38	F x2 M5x10
G x1 4mm	H x1 5mm	I x2 ST3.5X10

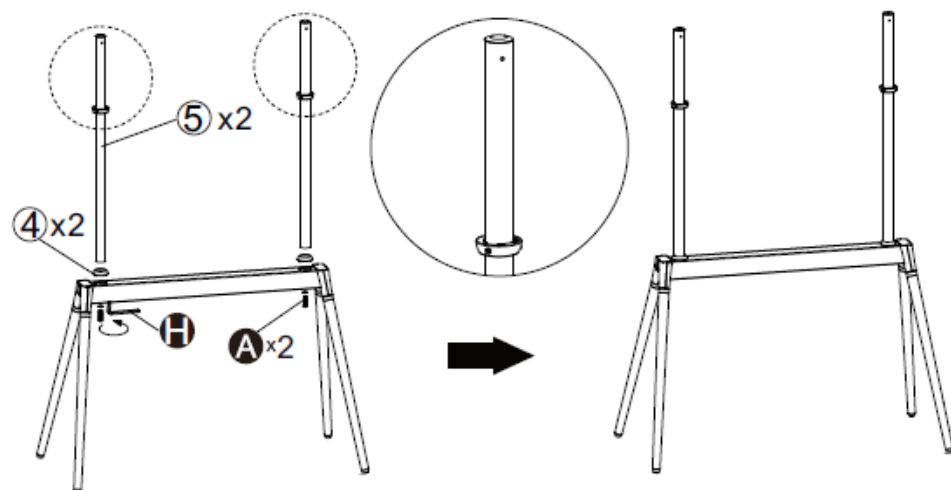
M-A x4 M5x30	M-B x4 M6x30	M-C x4 M6x50	M-D x4 M8x50
M-E x4 M8x70	M-F x4 	M-G x8 5mm	M-H x8 15mm

*Note: included are wall mount parts not needed for assembly

1

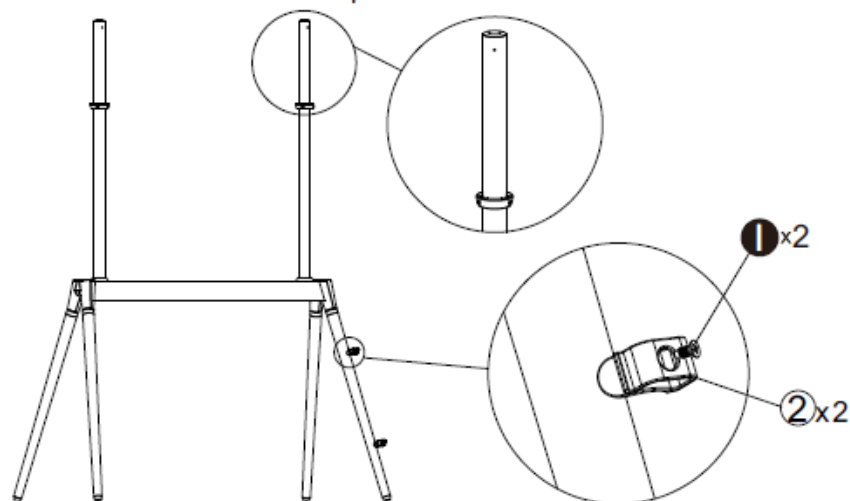


2



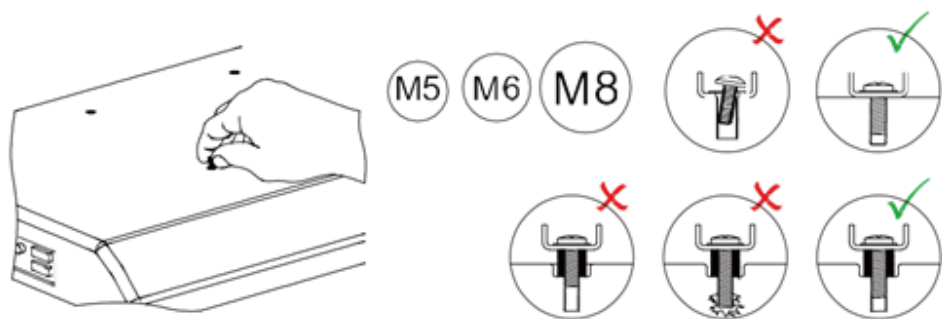
3

! Note: This is the back of the TV set. The cable clips should be installed on the wooden legs on the back of the TV set. Before installing the cable clips, remove the release paper on the inside of the cable clips.



4

How to choose mounting screws for your TV

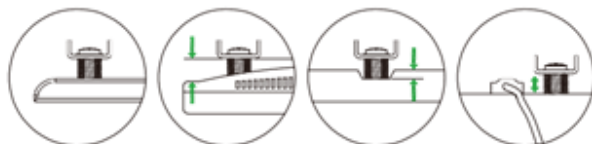
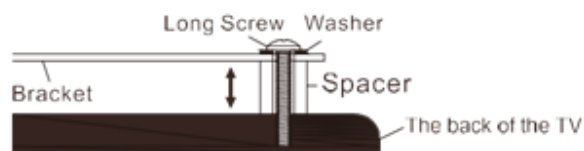


Choose the suitable length screws

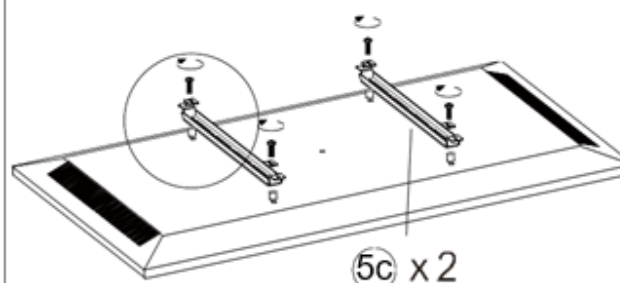
(a) For Flat-backed TV



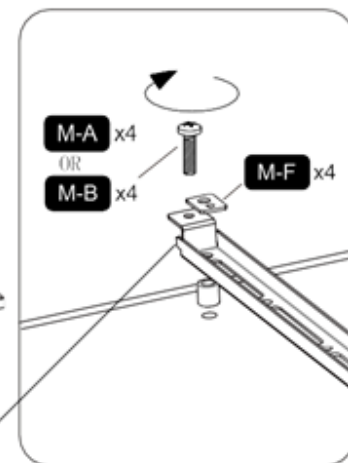
(b) For Irregular -backed (Rounded) TV



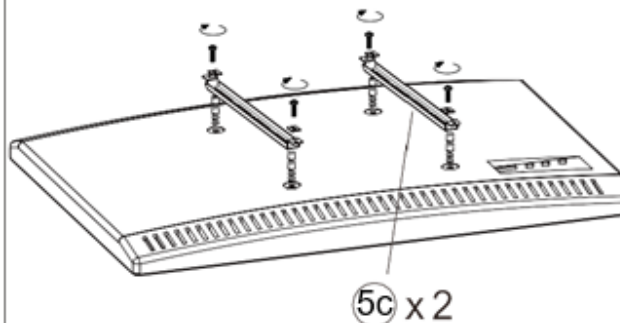
(a1) For Flat Screen TV



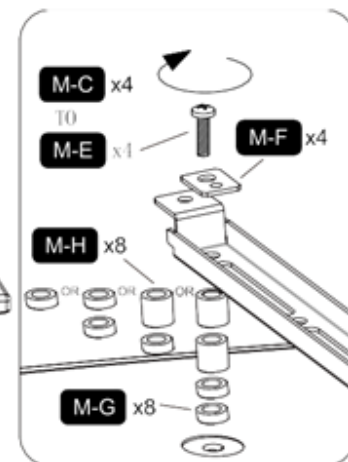
Note: Ensure brackets 5c are oriented in the same direction with tabs pointing to the top of the monitor.



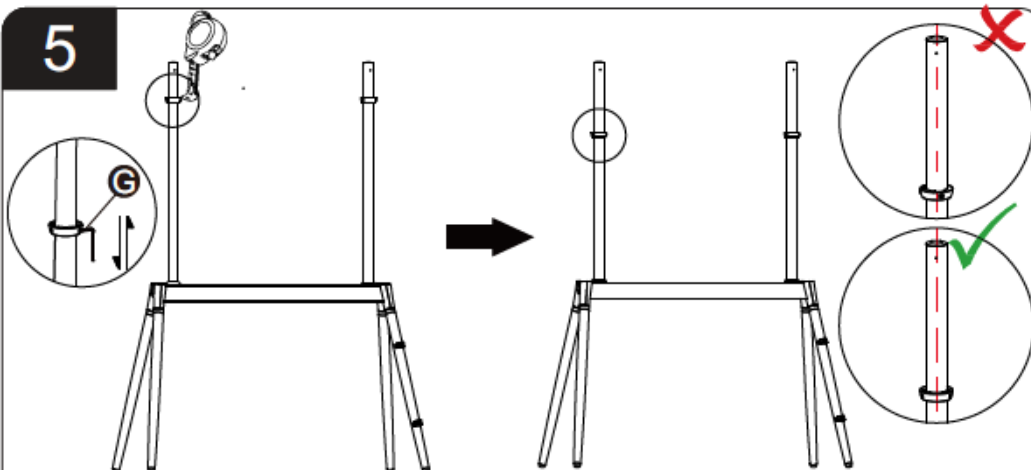
(a2)



Note: Ensure brackets 5c are oriented in the same direction with tabs pointing to the top of the monitor.



5

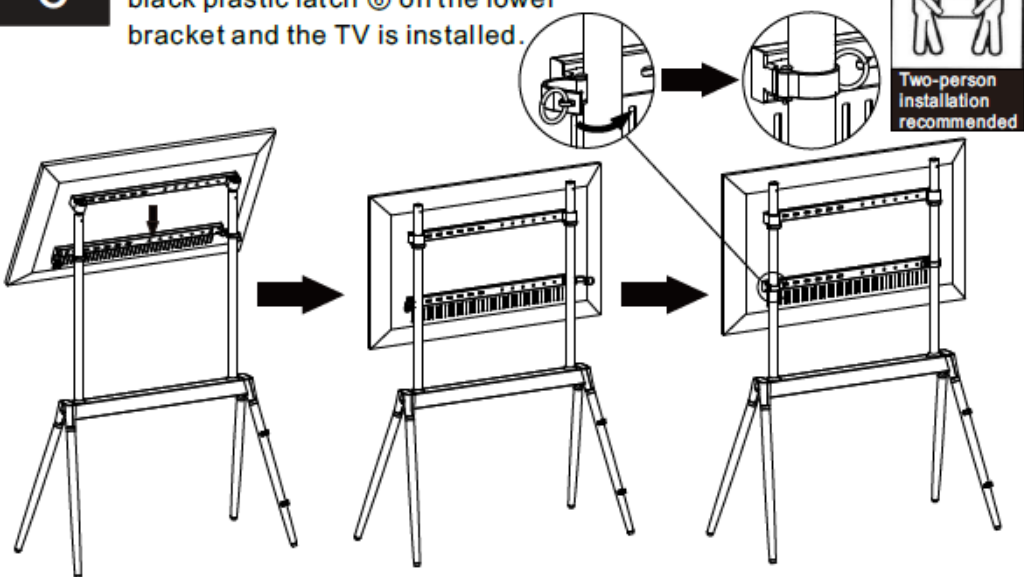


Before assembling the TV, use G wrench to adjust the height of the limit ring according to the size of the TV, and use self-provided tapeline to ensure the same height of the left and right limit rings.

The direction of the two thread holes of the limit ring should be in the rear to ensure that the height of the TV set can be adjusted after assembly.

6

After the upper bracket is set into the column, fasten the black plastic latch ⑥ on the lower bracket and the TV is installed.



7

