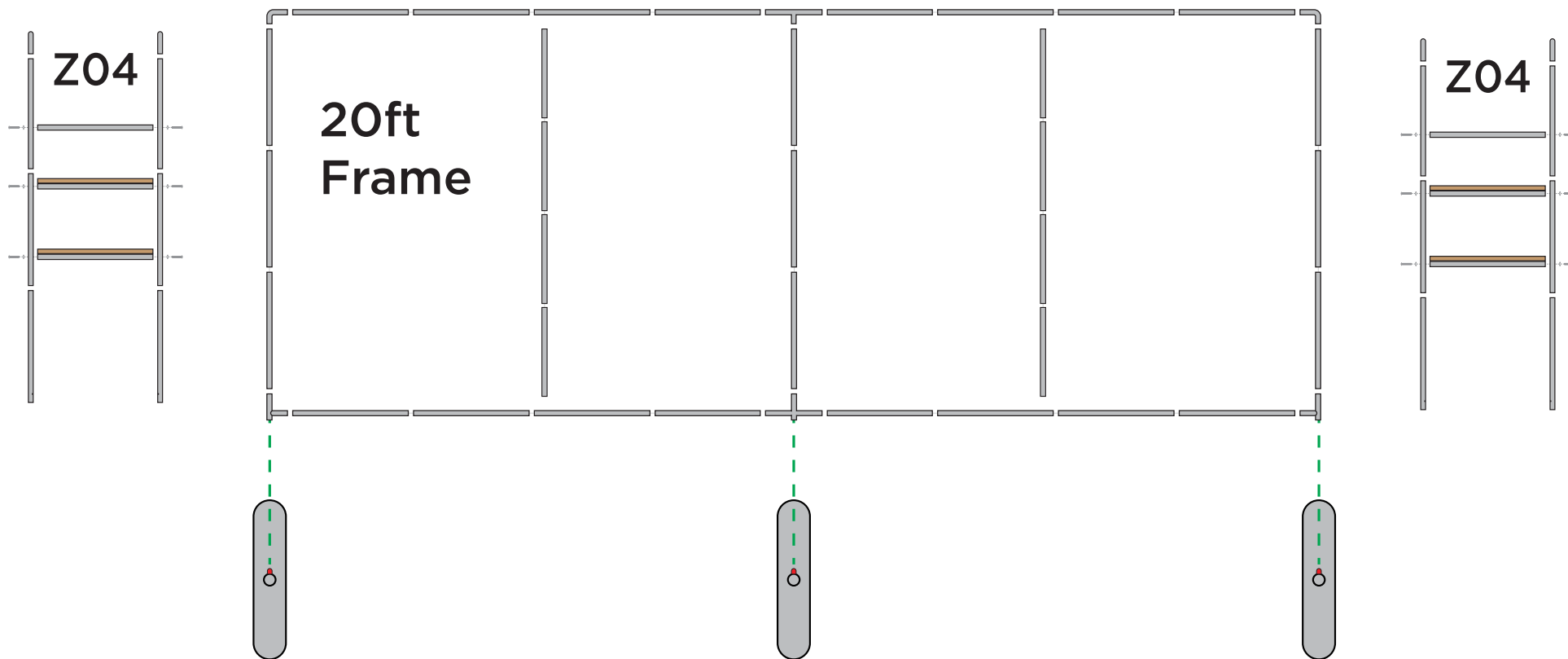
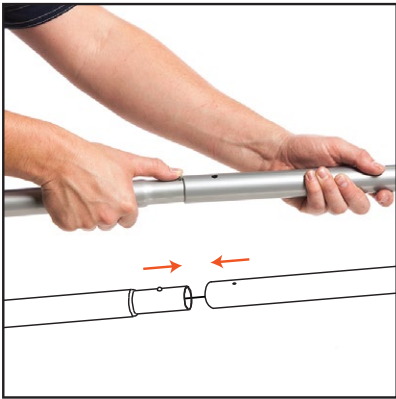


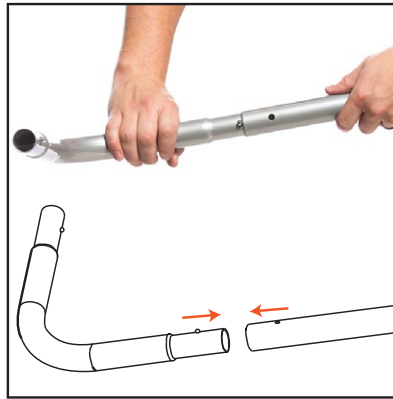
Hardware is labeled as seen in diagram below:



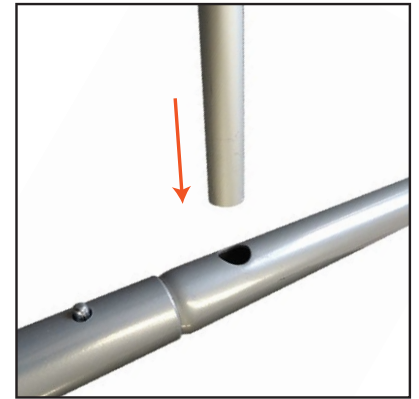
Note: Assembly is the same for all shapes and sizes of Ensemble frames



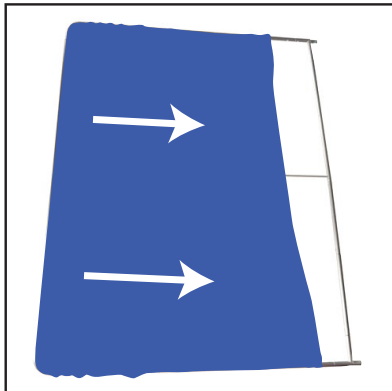
1. Straighten and assemble all bungeed poles.



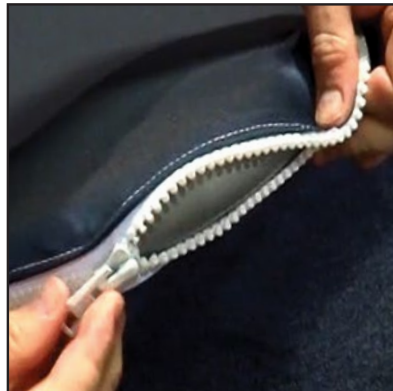
2. Connect poles to corners.  
(See diagram to on next page)



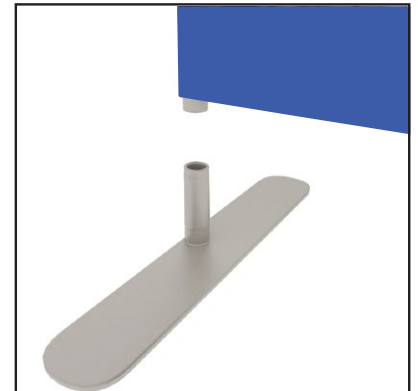
3. If your kit includes a center or horizontal support pole, insert it into the corresponding holes.



4. Lay frames down. Pull pillowcased graphic over frame and zip closed.



5. Zip up the bottom graphic.



6. Using the frame diagram, attach corresponding feet to frames.

## LED Lights



1. Clamp light clamp on top bar.  
Tip: Put lights on before standing the display up.



2. Slide light onto clamp and connect power cable.

